



Washing hands before milking

2. Wash hands before and after milking each animal.
3. Where possible wash the udder of the camel before milking.

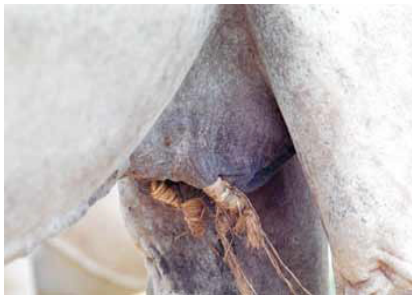


Milking using open containers



Containers for storage

4. Use easy to wash and hygienic containers for milking and storage of milk
5. Avoid tying of teats



Tying of teats

Treatment

- Ensure the teat is completely stripped of milk
- Consult an animal health technical person

Points to note

Some reagents are supplied as concentrates and require dilution. Dilute with sterile water or boiled and cooled water.



Compiled by:

Adongo A.O., Maichomo.M.W., Mungube.E.O.,
Tura.I., Kuria S. G., Wayua F. O., Changwony.K.,
Ndirangu P.N., Olum M.O. and Kiprono.K.A

For further information contact:

Institute Director,
Sheep, Goat and Camel Research Institute
P. O. BOX 147 60500 MARSABIT
Tel. 0692102040, Fax: 0692102220

Editorial and Publication coordinated by:

Knowledge, Information and Outreach Unit

KCSAP Brochure No. 2023



CONTROL MASTITIS FOR HYGIENIC CAMEL MILK



CONTROL MASTITIS FOR HYGIENIC CAMEL MILK



Introduction

Mastitis causes part or whole of the camel udder to swell. The disease is mainly caused by bacteria (*Staphylococcus aureus* and *Staphylococcus agalactiae*). Some local camel keepers believe the disease results from 'bad eye' or the envy of neighbours with ill feelings. It is commonly referred to as *Budha* by some camel keepers. Milk from an infected camel may contain blood, flakes and changes colour from white to yellow or red.

Symptoms and signs of mastitis in camel

- One or more quarters of the udder is swollen, red and painful
- Reduced milk production
- Difficulty in milking as the teat canal is sometimes blocked
- In severe cases, one or more teats may die off.
- The disease may resemble abscess in camels

Mode of spread of the disease

The bacteria causing the disease can spread from one infected camel to a healthy camel through:

- Poor milking hygiene.
- Contact with wound on the udder or teats
- Milkers not exhaustively milking the animal.
- Teat injury which may be caused by tying of teats and tick bites among others.
- Initial stages of the disease (sub clinical) can only be detected by the use of California Mastitis Test (CMT).

How to screen for Mastitis

Requirements

- Clean Water (preferably bottled water)
- California Mastitis Test (CMT) solution
- California Mastitis Test (CMT) paddle
- Strip cup



California Mastitis Test (CMT) Kit

Procedure

- In case one buys CMT reagent that is not premixed, mix it with water, following the instructions on the bottle.
- Place the paddle as shown with the handle facing the tale of the animal.

- Place the paddle directly facing each quarter of the udder.
- Squeeze each teat once (about 2 ml) directly into its corresponding dish until the milk sample from each teat is collected.
- In each dish with milk sample, add the same amount of reagent (CMT solution).
- Gently agitate the paddle to mix well with milk.
- Wait for about 30 to 60 seconds and observe the results.
- Animal with mastitis will show gel-like formation on the dish indicating a positive reaction with the reagent. See the hind left dish in the picture above.
- Sometimes milk with mastitis may taste salty or have blood clots.



(a) Sampling milk for testing from different quarters (b) Test results (gel-like formation is positive for mastitis)

Control of mastitis

1. Identify the infected lactating camels in the herd and milk them last.