



Kenya Climate Smart
Agriculture Project

How to Identify and Control Cattle Lung Disease (Contagious Bovine Pleuropneumonia)



How to Identify and Control Cattle Lung Disease (Contagious Bovine Pleuropneumonia)

What is Contagious bovine pleuropneumonia?

Contagious bovine pleuropneumonia (CBPP) is an infectious respiratory disease that affects cattle and water buffalos. The disease is also referred to as lung plague or cattle lung disease.

What causes CBPP?

It is caused by a bacteria which affects the lungs.

How do cattle get infected?

The cattle get infected through:

- Direct contact between infected and susceptible animals
- When they breath in contaminated air from infected animals especially when coughing
- Cattle which get healed carry the bacteria and are a source of infection to other cattle
- Outbreaks usually occur as a result of the movement of infected animals into a naïve herd



Herd of cattle in close proximity

How do i know an animal has the disease?

1. Symptoms of the disease

- Death within 3 weeks due to a lot of yellowish fluid collecting in the thoracic cavity (the pleura) of an infected animal
- Loss of appetite
- Rapid and difficult breathing
- Sick animals stands with front legs wide open
- Later, the animal groans when breathing
- Coughing
- Thick mucus from the nose
- Increased salivation may also be seen
- Weight loss
- Sick calves have swollen joints

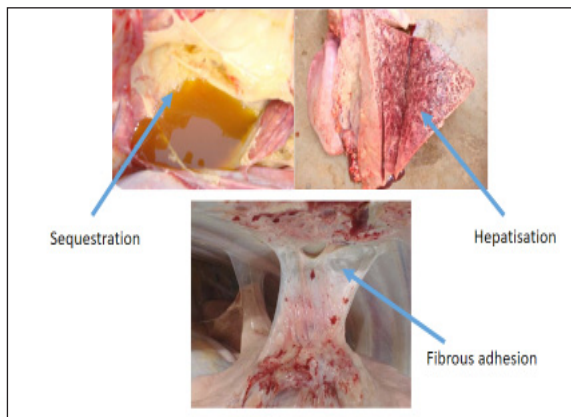


Clinical CBPP Cow with extended head and neck

2. Postmortem Observation

In dead animals you will find:

- ✓ Attachment of lungs on rib cage
- ✓ Large quantities of straw-colored fluid in chest cavity
- ✓ Lungs are hardened and appear like a liver



Lung lesions from an animal that died from CBPP

3. Laboratory tests



Serological testing of samples in the laboratory

4. Field screening test

A pen-side test that gives results in 10-15 minutes is available.



+VE

-VE

A rapid pen-side Latex agglutination test

Treatment for infected cattle

CBPP is treated with antibiotics such as tetracycline and tylosin.

NB: Treatment is not recommended because it encourages chronic carries of CBPP.

What preventive measures do I need to take?

The following measures can be taken to control CBPP

i) Vaccination

ii) Biosecurity control of CBPP

- Movement controls (Restrict movement of cattle from infected areas)
- Abattoir surveillance of CBPP involving lung examination

KCSAP Brochure No.



Compiled by: Jesang A., Maichomo M, Lutta O.H,
Ndirangu P.N. and Mwirigi M.

For further information contact:

Veterinary Research Institute, Muguga,

P.O. Box 32-00902 Kikuyu

Email: Director.vsri@kalro.org

Website: www.kalro.org

**Editorial and Publication coordinated by: Knowledge,
Information and Outreach Unit**